

# NOW AVAILABLE

## JOHNSON CROSSING SHOPPING CENTER

JOHNSON ST (HWY 23) & HWY 151- FOND DU LAC, WI



### Suite Number: C

Suite Space: 4,758 Sq. Ft.

Dimensions: Irregular

Ceiling Height: 16' Truss

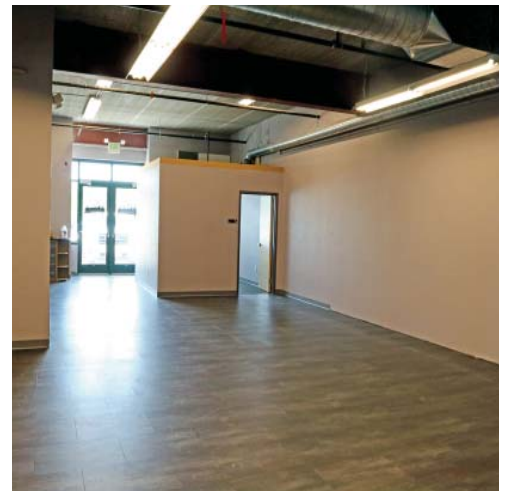
Bathrooms: 2 ADA

Lease Rate: \$16- 22 PSF, NNN

NNN Expense: \$4.40 (2019)

Traffic Count      Johnson Ave:    19,400 VPD  
   Hwy 151:        16,300 VPD

**Description:** Existing A+ Commercial Retail Space available at the gateway to Fond Du Lac on the expanding East side, with great visibility in the developing commercial zone. Shopping center is also occupied by Festival Foods, Planet Fitness, Starbucks, Verizon, GNC and more. This suite space is high visibility on the corner of the building at the West entrance to the center



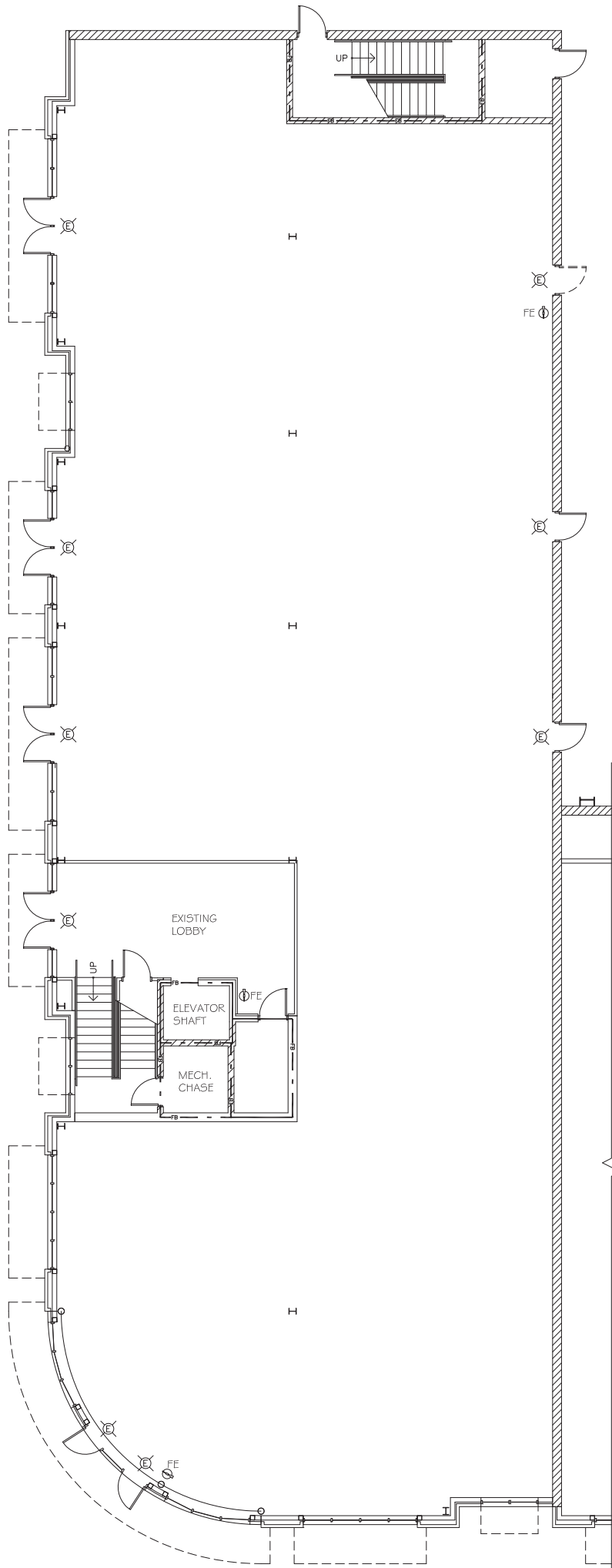
Interested Parties Please Contact:

Peter Jungbacker

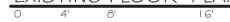
(920) 233 - 7219 ext. 18

[pjungbacker@alexanderbishop.com](mailto:pjungbacker@alexanderbishop.com)

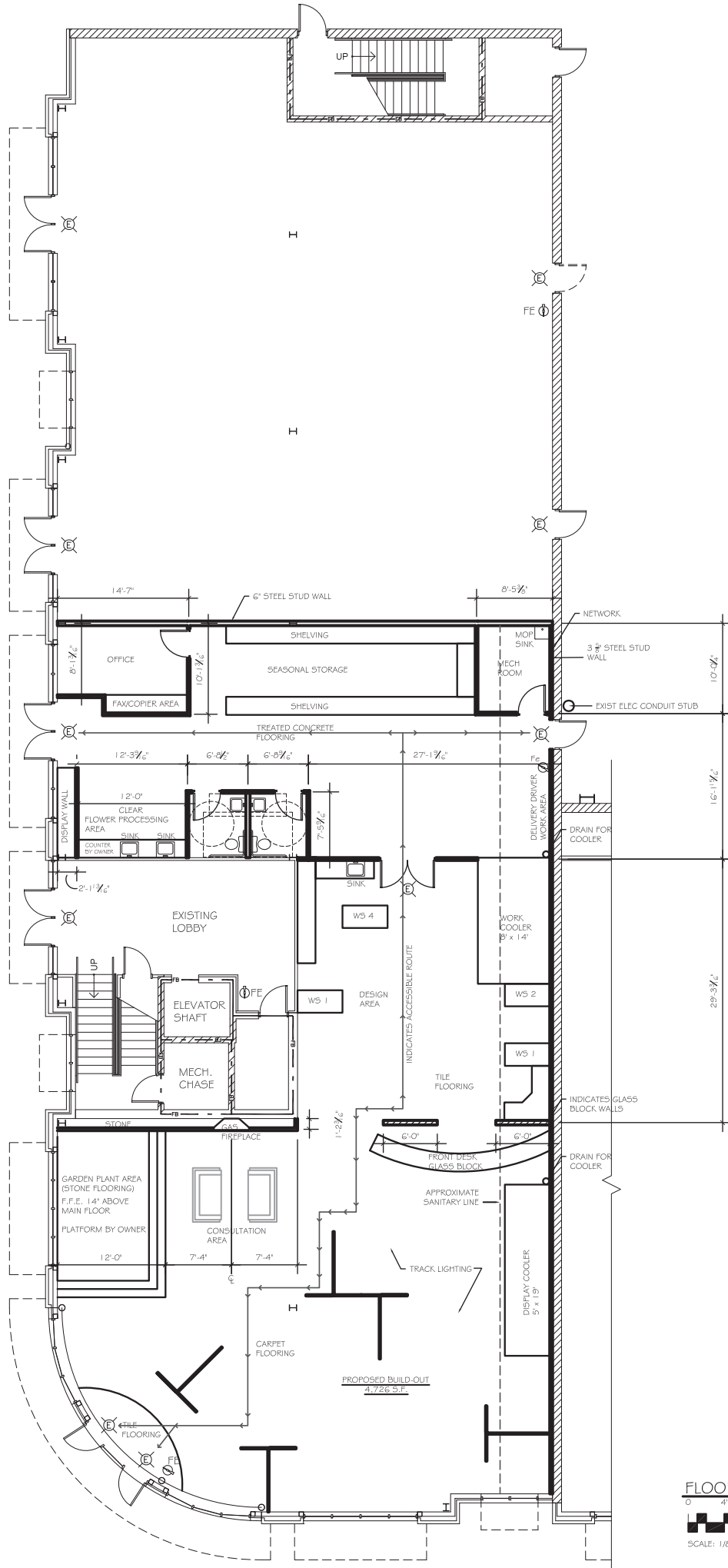




EXISTING FLOOR PLAN



SCALE: 1/8" = 1'-0"



APPROV

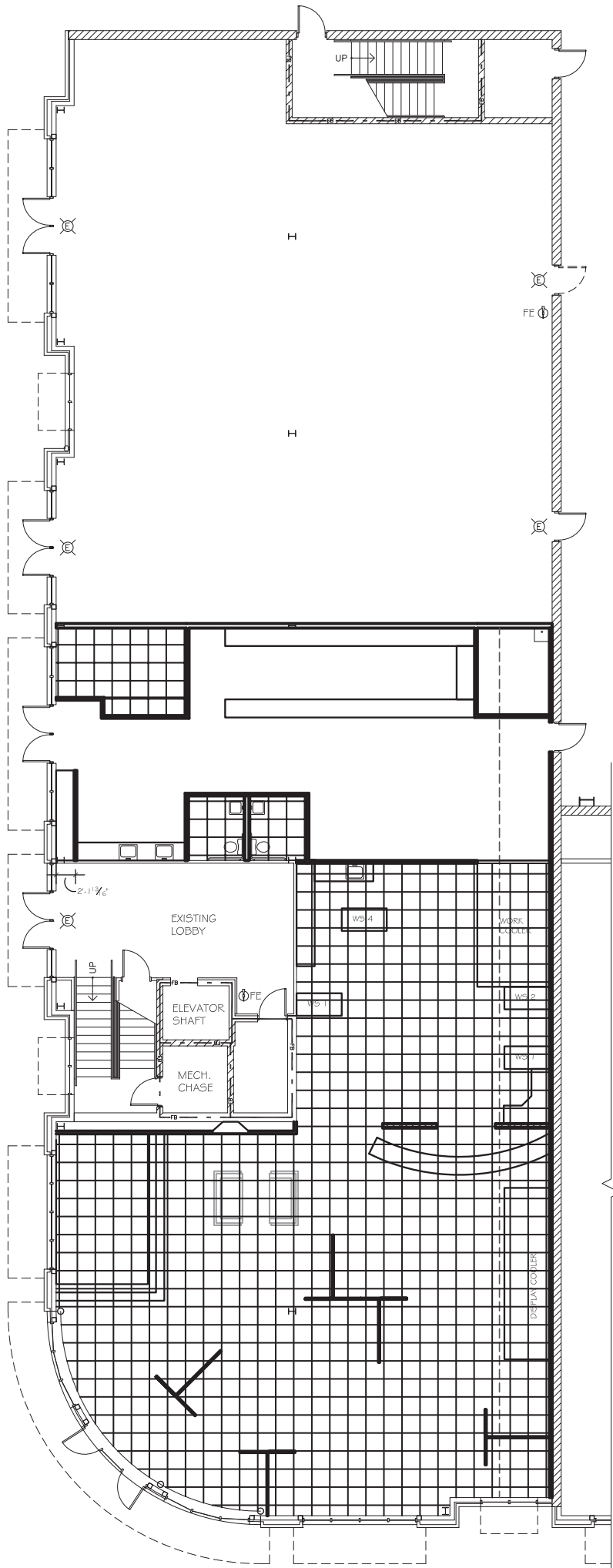
OWNER'S SIGNATURE	DATE
SALES REPRESENTATIVE	DATE

**NOTES:**  
 PLUMBER TO R.I. FOR:  
 (3) OWNER PROVIDED SINKS  
 (2) COOLER CONDENSATE DRAIN  
 FLOORING BY OWNER

**FLOOR PLAN**

SCALE: 1/8" = 1'-0"





A F

---

OWNER'S SIGNATURE

---

SALES REPRESENTATIVE

CEILING GRID LAYOUT



SCALE: 1/8" = 1'-0"