

Get ready for...

The Shops at Johnson Crossing

festival
food

& YOUR BUSINESS



High Traffic
Retail
Development

On Johnson St.
(Hwy 23) & High-
way 151

Fond du Lac,
Wisconsin



ALEXANDER & BISHOP, LTD.

www.alexanderbishop.com

FOND DU LAC
CITY

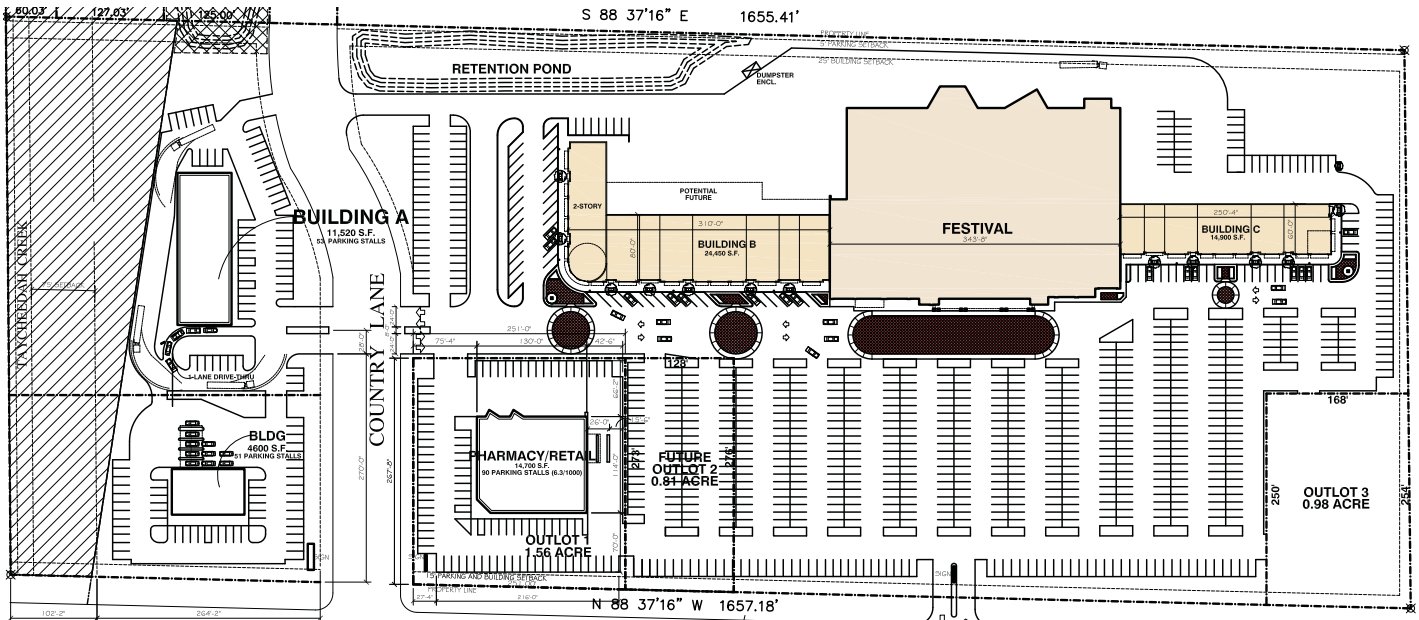


Sheboygan

Chester

ALEXANDER & BISHOP, LTD.

The Shops at Johnson Crossing



GLA: 165,000 SF
Space Available: 1,200-18,000 SF
Delivery: Fall 2007
Lease Rate: \$18-22 PSF, NNN
NNN Expenses Estimated: \$3.50 PSF

2006 Demographics

	1 Mile	3 Miles	5 Miles
Estimated Population:	2,252	31,491	51,554
HH Income:	\$76,358	\$60,005	\$58,152

Traffic Counts: Highway 151: N/A
Johnson St: 18,800

Grocery anchored retail development at the Northwest intersection of state highways 23 & 151 on Fond Du Lac's growing East side. Tenants will have great visibility from the highway and be in close proximity to a hospital, high school, college, and rapidly growing residential areas.



For Additional Information Please Contact

Ed Bowen

ebowen@alexanderbishop.com

(920) 233-7219 x23

www.alexanderbishop.com

FOND DU LAC CITY

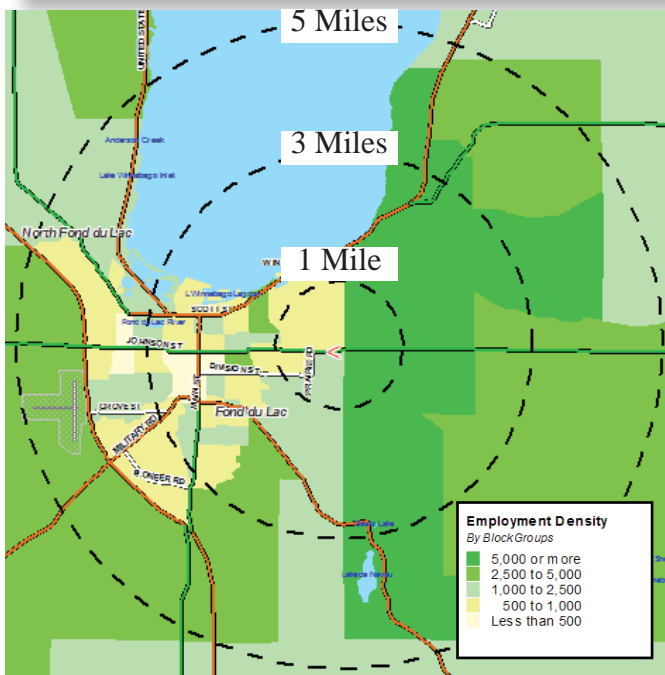
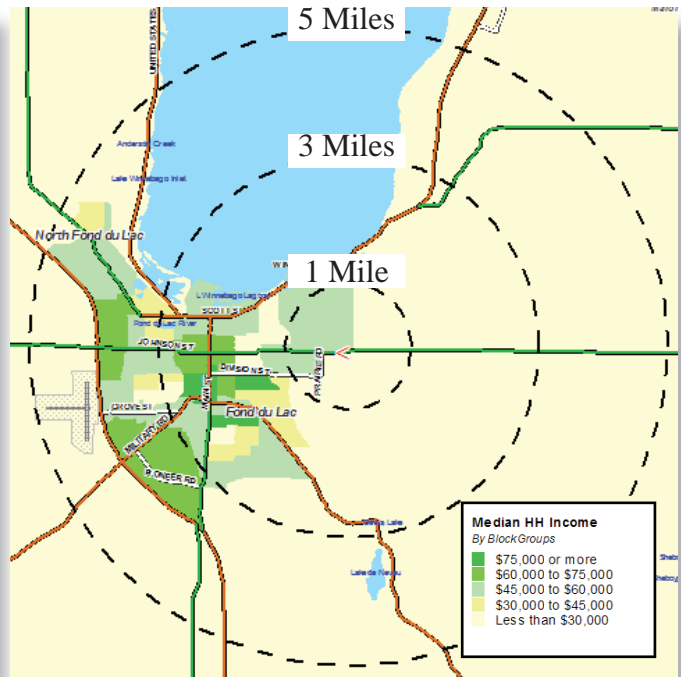
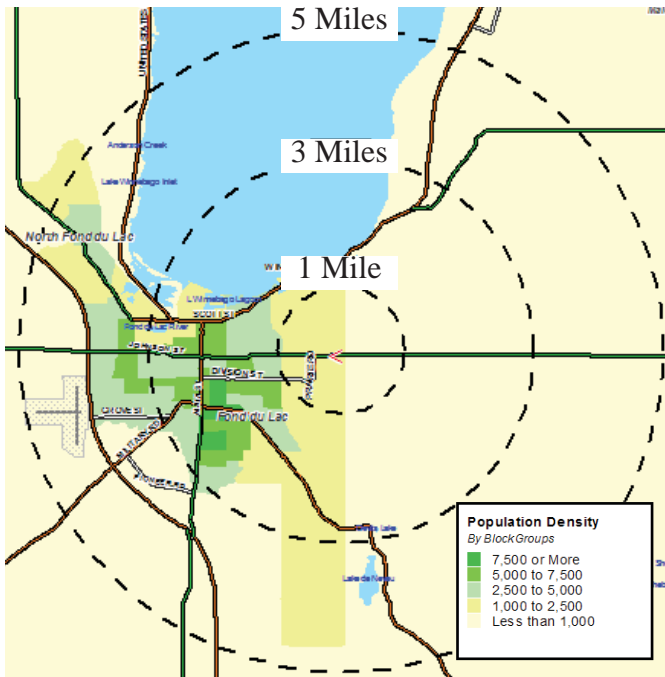


Sheboygan

ALEXANDER & BISHOP, LTD.

Chester

The Shops at Johnson Crossing



	1.00 mi radius	3.00 mi radius	5.00 mi radius
HWY 151 & HWY 23			
2005 Estimated Population	2,252	31,491	51,554
2005 Est. Households	894	12,605	20,779
2005 Est. Average Household Income	\$ 76,358	\$ 60,005	\$ 60,515
2005 Est. Total Housing Units	945	13,268	22,052

FOND DU LAC
CITY



Sheboygan

ALEXANDER & BISHOP, LTD.

Chester

The Shops at Johnson Crossing

Location Map



For Additional Information Please Contact

Ed Bowen

ebowen@alexanderbishop.com

(920) 233-7219 x23

www.alexanderbishop.com