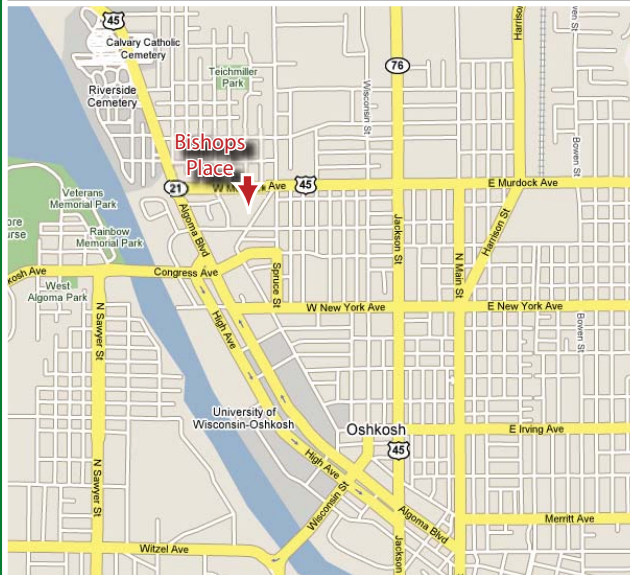


BISHOPS PLACE

1627 Elmwood Ave.
Oshkosh, WI 54901

Bishops Place is quietly located close to the University of Wisconsin - Oshkosh campus, the Paine Art Center, several parks and downtown shopping and entertainment.



ALEXANDER & BISHOP, LTD.

300 N. Main St., Oshkosh, WI 54901

Phone: (920) 235-7368 Fax: (920) 233-2482

www.alexanderbishop.com/residential.html

BISHOPS PLACE



1627 Elmwood Ave.
Oshkosh, WI 54901

2 Bedroom Apartments
Internet Included
Heat Included
Water Included
Parking Included
Close to Campus
New Models Available



ALEXANDER & BISHOP, LTD.

www.alexanderbishop.com/residential.html

About Bishops Place

2 Bedroom

\$ _____ /mo.

Security Deposit \$ _____

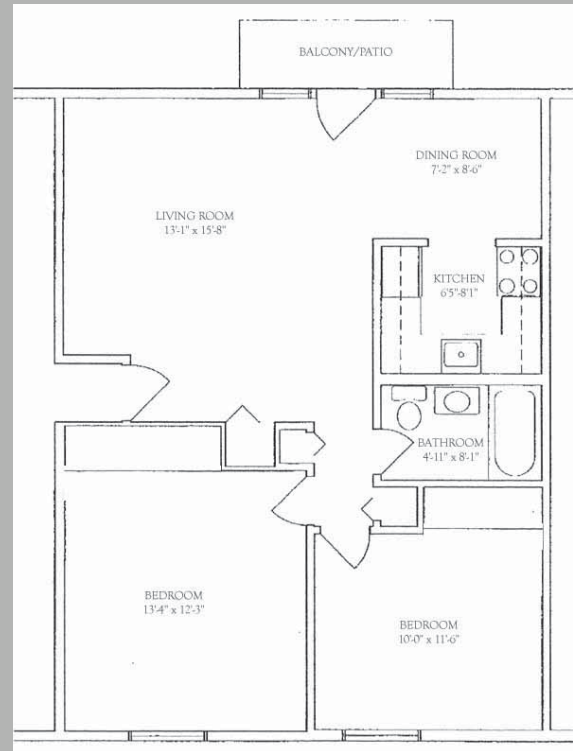
For current prices or to apply at Bishops Place, please visit:

www.alexanderbishop.com/bishopsplace.html



1627 Elmwood Ave.
Oshkosh, WI 54901

Floor Plan



790 Sq.Ft.

Bishops Place Amenities



- Internet Included
- Heat Included
- Water Included
- Parking Included
- Hardwood Floors
- Balcony / Patio
- On-site Laundry
- Appliances Including
 - Refrigerator
 - Self Cleaning Range
 - Dishwasher
 - Disposal*
 - Microwave*
- Individually Controlled Heat
- Air Conditioner
- Ceiling Fans
- Mini Blinds
- 24 Hour Maintenance
- Smoke Free Apartments
- *not available in all units

Bishops Place Contact



Jeanie Oliviera
Leasing & Management

(920) 235-7368 office
(920) 233-2482 fax
(920) 203-9418 cell

Joliviera@alexanderbishop.com

Affordable Comfort

Bishops Place is quietly located 5 blocks from the University of Wisconsin - Oshkosh. Its close proximity to campus and downtown entertainment make it a great choice for your home, not to mention quick access to Hwy 45 & 41.

Filled with natural light, plush carpet, and hardwood floors, these units are recently remodeled and each have their own patio/ balcony. Also included is extra time for your own relaxation because included in your rent is heat, water, and internet access, giving you less to think about.



Bishops Place Entrance